



# Welcome Aboard!

---

Transferring is stressful. We're here to help.



**Command Master Chief:** CMDCM PUELLO

[zahul.puello.mil@us.navy.mil](mailto:zahul.puello.mil@us.navy.mil)

**Command Sponsor Coordinator:** BM1 JONES

[Marcus.d.jones82.mil@us.navy.mil](mailto:Marcus.d.jones82.mil@us.navy.mil)

# TABLE OF CONTENTS

	Page
Fleet & Family Support Center Letter -----	02
Fleet & Family Support Center Letter-----	03
Ombudsmen Letter-----	05
Navy Housing Letter-----	06
Military OneSource-----	08
MyNavyFamily Mobile App-----	09
Base Phone Directory-----	10
Weapons Registration-----	11
Hunting Registration-----	11
Youth Center/ Child Development Center-----	12
Medical/Tricare Transition-----	13
New Jersey Map-----	15
Mainside Base Map-----	16
Waterfront Base Map-----	17
Mainside/Waterfront Base Transit Map-----	18

Interested in learning more about the State of New Jersey? Head to  
[visitnj.org/attractions](http://visitnj.org/attractions) for more information.



Weapons Station Earle

34 South, Building C-59

NJ 07722-5011

Naval

201 Highway

Colts Neck,

# Welcome Aboard!

Naval Weapons Station Earle Colts Neck and

Leonardo, New Jersey

Welcome to scenic Monmouth County, New Jersey. Just a train ride from NYC! As the only standalone naval station in NJ, you will be pleasantly surprised at all the wonderful activities and places that you can find within a short drive from our front gates. This desirable area serves as an 'escape' for people living or working in New York City and has been listed in *The New Yorker* as one of the best places to live in the country. One local community, Brick, N.J., was rated the No. 1 safest communities in the US!

The station's Main side is located in Colts Neck and the Waterfront is in the Leonardo section of Middletown. The two areas are connected by a private, federally-owned roadway. That can cut a commute by almost 20 minutes! Colts Neck sits in the heart of New Jersey's horse farming region and is only 20 minutes away from the famed Jersey Shore. Leonardo is located on Sandy Hook Bay overlooking the Atlantic Ocean and the New York skyline.

New Jersey is known as "The Garden State", which is evident by the numerous orchards and farms you can find right outside the gates of main side. From the mountains in the north, to the Victorian era town of Cape May in the south, New Jersey has it all, and right within driving distance

Here at NWS Earle's Fleet and Family Support Center (FFSC) we want to welcome you to our humble home away from home. We know that relocating can be a stressful time so we offer classes for spouses (new and experienced) to make this transition one of the best. We honor our service members by making sure we offer programs that not only help their peace of mind but keep everyone mission ready.

The staff of the Fleet and Family Support Center is pleased to serve you. FFSC has resources for all to include relocating families and single sailors. We want you to know this is YOUR Fleet and Family Support Center, where military comes first. We have lists of area grocery stores, EFMP Specialists, Recreational activities and much more! Please feel free to stop by and visit or call us at (COMM) (732) 866-2115 or (DSN) 449-2115. We are located in Building C-59, next to the Housing Office.



Dear NWS Earle Family,  
Welcome to Naval Weapons  
Station Earle!



My name is Haylee Ferry and I am your new Ombudsman. I am here to assist you and your family's transition on board, and throughout your time here in New Jersey.

Ombudsmen serve as a liaison between the command and the families of the Sailors. I also have access to information and a network of resources including the Navy and Marine Corps Relief Society and Fleet and Family Support Centers. I am a voluntary representative designated by the command to serve as an advocate to support and guide you and your family. I am committed to serving you with patience, professionalism, reliability, and confidentiality. Please be assured that an ombudsman follows strict guidelines of confidentiality, as required by the Navy Family Ombudsman Program.

I am honored to serve as the Ombudsman for Naval Weapons Station Earle. Please don't hesitate to contact me via phone call or e-mail during normal hours. I am available 24 hours a day for emergencies. My contact information is listed below. I look forward to meeting you upon your arrival to the beautiful state of New Jersey!

Sincerely,

Mrs. Haylee Ferry

Naval Weapons Station Earle

OMBUDSMAN

[nwsearleombudsman01@gmail.com](mailto:nwsearleombudsman01@gmail.com)

(609) 513-5617

Hello and congratulations on your orders to Naval Weapons Station Earle!

Although your command and sponsor can provide a wealth of information on your new duty station, we at the Naval Weapons Station Earle Housing Service Center look forward to speaking with you directly about your specific housing needs, questions and concerns. We are your point of contact for all housing at Naval Weapons Station Earle: Family; Unaccompanied; and Local Community. **Please contact us at 1 (800) 987-4775 or DSN 449-2177 or e-mail at**

[earlehousing@navy.mil](mailto:earlehousing@navy.mil), as soon as you are in receipt of orders to Naval Weapons Station Earle to begin discussing all of your housing options.

NJ is an extremely high cost area and the vacancy rate in the local community is currently very low. On base housing may be the most practical and economical decision. We strongly encourage everyone to apply for on base housing even if you don't think you want to live on base. You are under no obligation to accept base housing, but it's best to apply and have the option available.

Prior to entering into a lease, it is very important that service members speak to the Housing Service Center personnel. We are very familiar with the area. You may be able to find a rental that seems reasonable but it may be in an area that has high crime rate, bad school district or has some other type of negative factor that may not be apparent to someone that is not familiar with the area. Once you sign that lease, you are legally bound. There is nothing that you or your command can do if you change your mind.

**Family Housing (FH):** On-base family housing is privatized and is managed and maintained by Balfour Beatty Communities (BBC) in partnership with the Navy. The Navy Housing Service Center still maintains the waiting list. Applications are available through the Housing Service Center and all completed applications must be processed through the Housing Service Center prior to referral to BBC for assignment. If you chose this option, you will receive your BAH and set up an allotment to BBC to pay your rent. Rent is normally the "With Dependent" BAH rate for your pay grade for the NWS Earle area. There may be rental discounts being offered. Please contact BBC directly at (732)308-1003 to inquire about any current specials. You can view photos and floor plans on their website at: [www.nws Earle homes.com](http://www.nws Earle homes.com). You should know that there is a two pet limit in BBC housing. Certain "aggressive breeds" (Akita, Boxer, Chow, Doberman, and Rottweiler) require proof of \$100,000 liability insurance prior to move in. American Staffordshire Terriers, American Bull Dogs, and American Pit Bulls are **NOT** allowed in BBC housing.

If you choose to live in BBC housing, you should understand that rents are paid to BBC in arrears. Meaning if you move in mid-month, you will have pro-rated rent due at the time of your lease signing. BBC will let you know prior to your lease signing, how much prorated rent will be due so you are prepared. It is important that you save your BAH allowances and any other allowances you receive in between duty stations to be prepared for this financial obligation

**Unaccompanied Personnel Housing (UPH):** UPH is primarily for single service members that are E4 and below. All E1-E3, unaccompanied personnel will be housed two per room. E4s will be housed singly, if space permits. Anyone over an E4 may be housed if space permits, but single service members E5 and above should plan on residing in the local community. All single sailors E5 and above who would like to reside off base must submit a special request chit to receive BAH and have it approved PRIOR to signing a lease.

All inbound personnel should be aware that there is very limited room available for Geographical Bachelors (GB) in UPH. Interested personnel should contact the Housing Service Center directly for current availability and should be prepared to make alternate plans.

Balfour Beatty offers a roommate program that also has limited availability. This may be an option for those wishing to be a GB here at Earle. If you are interested in this program, please contact BBC directly about the program cost and current availability. If you are still interested, please contact the Housing Service Center for an application.

**Off-Base Housing:** We have many resources available for off-base rental listings. We prefer to discuss your housing preferences with you and tailor a list to your specific wants and needs rather than handout a generic listing. Community rentals come and go quickly, dealing one on one with inbound personnel rather than maintaining a generic list allows us to provide the most timely and accurate information on off base rentals.

It is important to note the condition of the home or apartment you are renting and documenting with photos before you move in. Make sure that both you and the landlord have a record of the condition of the residence at move in so you will not be charged for any pre-existing damage.

You are strongly encouraged to get renters insurance whether you chose to live on or off base.

It is the service members responsibility to ensure that they have done what is necessary to get their BAH started prior to signing a lease (whether it's PPV or local community housing). Delays in getting your BAH started do NOT relieve you of your obligation to pay your rent. Please let us know if you need assistance. Additionally, please remember that the BAH that you receive is meant to pay for your housing (rent). It is not for new furniture, or your car payment, or a vacation.

We at the Housing Services Center look forward to meeting you and assisting you and your family with all your housing needs.

Sincerely,

Navy Housing Welcome Center



**RELOCATING?**  
**WE CAN HELP!**

Check out the following link and make a smooth  
move with these online tools:

[Support for Military Personnel & Families • Military OneSource](#)

- ✓ Military INSTALLATIONS: Find maps, photos and more on over 250 military installations worldwide.
- ✓ Plan my move: Provides e-moving tools, planning calendars, checklists and information on education and employment.
- ✓ Military OneSource Relocation Tool: Compare communities throughout the US. Find cost of living reports, school report cards, a salary analyzer, crime and safety reports, calculators and more.

You name it. We can help – 24/7

[Connecting You to Your Best](#)

[MilLife](#)

Contact Military OneSource at

1-800-342-9647

For your specific relocation needs.





# MyNavy Family Mobile Application

Updated 2019



An official U.S. Navy mobile application produced by the PMW 240 Program

## What is the MyNavy Family app?

The MyNavy Family application is the first tool by the U.S. Navy developed for Navy spouses and Sailors' families that combines authoritative information from more than two dozen websites into a single, convenient application.

In addition to a wealth of useful content, the app offers several features:

### Military Installation Search

Find information about every military installation around the world with contact information, base map, programs, and services, plus an overview of its mission.

### MyNavy Career Center

Get help and information with this 24/7 resource for help and information, with in-app ability to call or send an email to a customer service representative.

### Emergency Contacts

Access websites and phone numbers for immediate support from a range of organizations, such as National Suicide Prevention Lifeline, Sexual Assault Crisis Support, National Domestic Violence Hotline, and others.

### Calendar

Add dates and events to calendars associated with a user's mobile devices.

### Content Sharing

Share information by using other mobile device applications, such as email, SMS text, and iMessage.

### Feedback

Provide input about the app content and use.

### TOPICS OF INTEREST

Available information and resources cover a wide variety of topics within the following categories:

- ✓ New Spouse
- ✓ Mentorship & Networking
- ✓ Employment & Adult Education
- ✓ Family Financial Planning\*
- ✓ Parenthood
- ✓ Special Needs Family Support
- ✓ Moving & Relocation
- ✓ Service Member Deployment
- ✓ Emotional Support Services
- ✓ Recreation, Lodging, Shopping & Travel
- ✓ Family Emergencies
- ✓ Transition & Retirement
- ✓ Parents & Family Members of Sailors\*
- ✓ Survivors Resources\*

\* New features in the November release.



Google Play App Store: Click [HERE](https://play.google.com/store/apps/details?id=mil.navy.mynavyfamily) to download app.

Apple iTunes App Store: Click [HERE](https://apps.apple.com/us/app/mynavy-family/id1453442455) to download app.

Learn more & download the app here: [applocker.navy.mil](https://applocker.navy.mil)



Distribution Statement A:  
Approved for public release and unlimited distribution.

DOWNLOAD HERE

Navy App Locker:

<https://www.applocker.navy.mil/>

Google Play Store:

<https://play.google.com/store/apps/details?id=mil.navy.mynavyfamily>

iTunes App Store:

<https://apps.apple.com/us/app/mynavy-family/id1453442455>

## NAVAL WEAPONS STATION EARLE PHONE DIRECTORY

HOUSING:

Deer Run Lodging

(732) 866-2448

Navy Gateway Inns and Suites

(877) 628-9233

RV Park

(732) 866-2448

Housing Service Center

(732) 866-2177

Unaccompanied Housing

(732) 866-2864

#### OTHER:

Child Development Center

(732) 866-2518

School Liaison Officer

(732) 866-2472

Fleet and Family Support Center

(732) 866-2115

Pass and ID Cards (Mainside)

(732) 866-2243

Pass and ID Cards (Waterfront)

(732) 866-7104

Youth Center

(732) 866-2148

#### MWR:

MWR Recreation Center

(732) 866-2106

Morale, Warfare and  
Recreation (MWR)

(732) 866-2350

Mainside Fitness Center

(732) 866-2304

Bay Breeze Fitness Center

(732) 866-7059

Navy Exchange (NEX)

(732) 866-2893

Auto Skills Center

(732) 866-2105

Pool

(732) 866-2351

Long Term Vehicle Storage

(732) 866-2448

Tickets and Travel Office

(732) 866-2103

Navy Federal Credit Union

(732) 866-4044

Navy-Marine Corps Relief  
Society

(732) 866-2161

#### TENANT COMMANDS:

Security Department

(732) 620-5065

Explosive Ordnance Disposal

(Mobile Unit 12) (732) 866-

2258 NCIS

(732) 866-2235

Navy Munitions Command

(732) 866-2292

MSNAP

(732) 866-2425

NOSC (Reserves)

(732) 866-7288

NAVFAC (Public Works)

(732) 866-2706

NAVOSH Storefront

(732) 866-2472

OHMSETT

(732) 866-7183 Dental

Clinic

(732) 866-2261

Naval Medical Branch Clinic

(732) 866-2300

Legal Assistance

(732) 866-2066



## How to register personally owned firearms on NWS Earle?

[CLICK HERE](#) for the base instruction governing policy and guidelines for possession, registration and storage of privately owned weapons on board Naval Weapons Station

Enclosure 1: Base Registration Form.

Enclosure 2: DD Form 2706.

- Must be routed to your Department Head, followed by the Security Department. The ICO will approve/deny all requests. Barracks personnel are NOT allowed to store weapons in their rooms.



## Do you have questions about registering to hunt onboard?

[CLICK HERE](#) for the base instruction governing policy and guidelines for hunting onboard Naval Weapons Station Earle.

Enclosure 1: Hunting Badge Application.

Enclosure 3: Hunting Map



# NJ SCHOOLS & EDUCATIONAL PROGRAMS

## New Jersey is known for having great schools!

New Jersey schools provide academic excellence and an array of extra-curricular activities. The public school your child/children will attend is determined by where you choose to reside within the community. Residents of Naval Weapons Station Earle are designated to local school districts. In the local area, there are multiple towns within commuting distance of Naval Weapons Station Earle. Monmouth County has many beautiful parks which offer great recreational programs for children. For more information, please contact the School Liaison Officer at 732-866-2472 or [SLO.NWSEARLE.fct@navy.mil](mailto:SLO.NWSEARLE.fct@navy.mil)



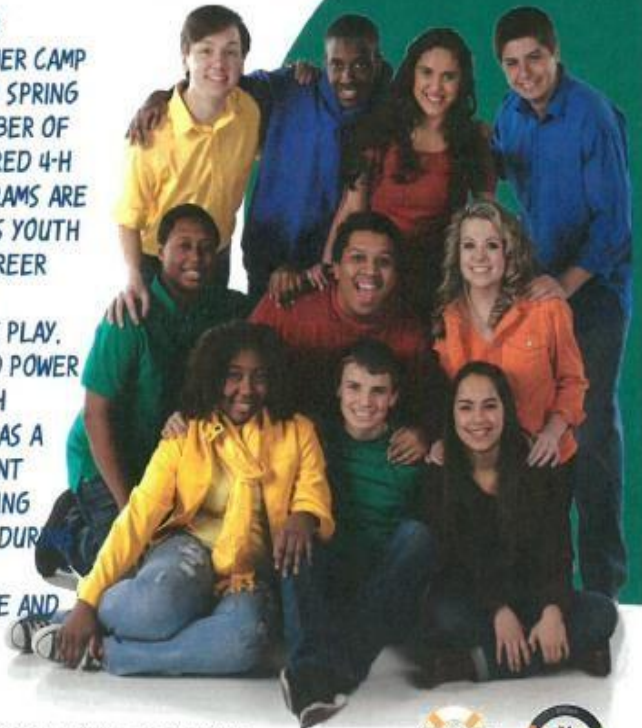
## THE CDC PROGRAM

PROVIDES BREAKFAST, LUNCH SNACK, INDOOR AND OUTDOOR ACTIVITY. INVOLVES PARENTS IN PLANNING THROUGH THE PARENT INVOLVEMENT BOARD, AND FREQUENTLY HAS EVENTS IN WHICH PARENTS AND OTHERS ARE INVITED. THE DIRECTOR PLACES EMPHASIS ON READING IN THE CLASSROOMS, AND A BROAD VARIETY OF STIMULATING MATERIALS IS PROVIDED TO ENCOURAGE EARLY READING HABITS AMONG THE CHILDREN. THE CDC PROVIDES SPECIAL PROGRAMS HONORING SPECIFIC EVENTS, INCLUDING THE WEEK OF THE MILITARY CHILD AND READING WEEK, WHEN EMPLOYEES ARE INVITED TO COME IN AND READ TO A CLASS.

## THE YOUTH CENTER

MAINTAINS A SCHOOL AGE CARE (SAC) PROGRAM FOR CHILDREN AGES 5-12 YEARS OLD AS WELL AS A SUMMER CAMP PROGRAM AND EXTENDED DAYS DURING WINTER AND SPRING BREAKS. THE YOUTH PROGRAM IS AN AFFILIATE MEMBER OF BOYS GIRLS CLUBS OF AMERICA AND HAS A CHARTERED 4-H PROGRAM. BOTH TORCH AND KEYSTONE CLUB PROGRAMS ARE OFFERED AT THE EARLE YOUTH CENTER AS WELL AS YOUTH

OF THE YEAR, CAREER LAUNCH, MONEY MATTERS, TRIPLE PLAY, SMART GIRLS AND POWER HOUR. THE YOUTH PROGRAM ALSO HAS A TEEN EMPLOYMENT PROGRAM, ENABLING TEENS TO WORK DURING THE SUMMER FOR BOTH INCOME AND EXPERIENCE.

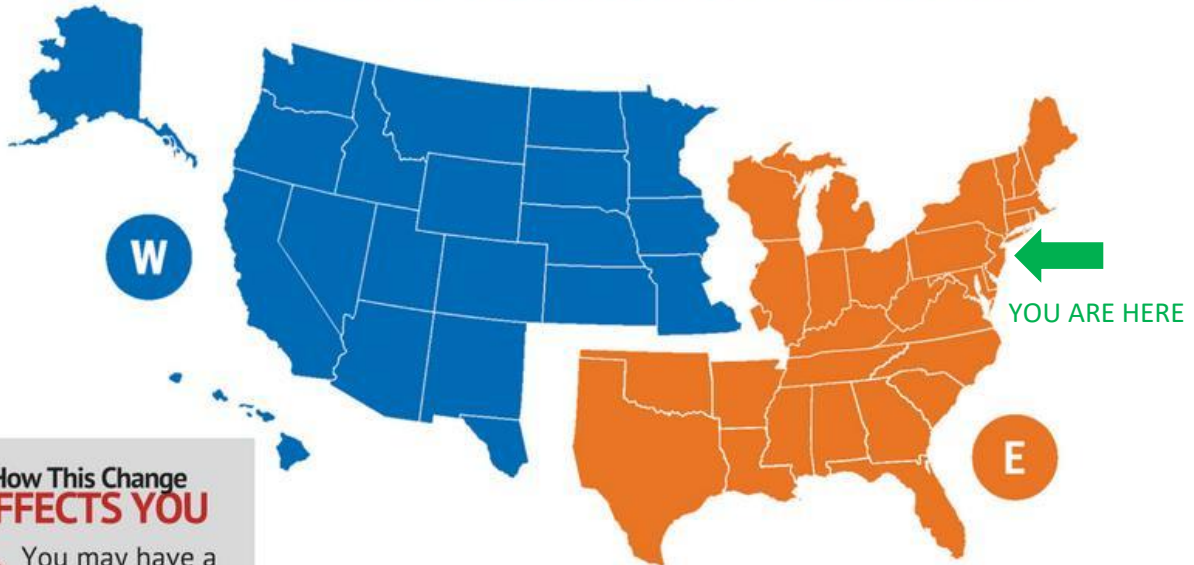


For more information, contact the School Liaison Officer at 732-866-2472





## Reduction of **3 REGIONS TO 2**



### How This Change **AFFECTS YOU**

- ✓ You may have a new regional contractor.
- ✓ You may have a new provider network.
- ✓ If using Prime, your primary care manager may change.
- ✓ You'll get more seamless support between regions.

### **WEST REGION**

Same as Existing  
West Region.

Health Net  
[www.hnfs.com](http://www.hnfs.com)

### **EAST REGION**

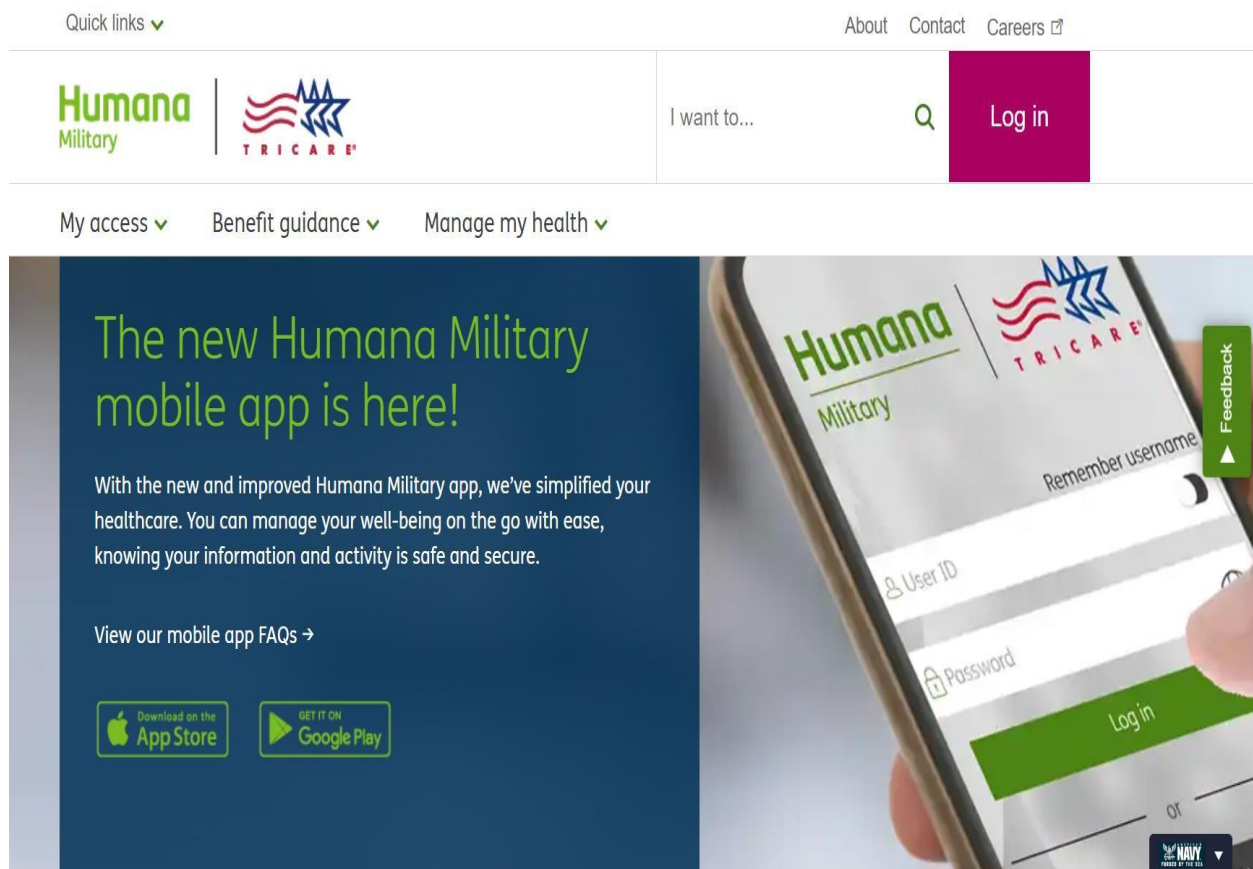
Merge of North &  
South Regions.

Humana Military  
[www.humanamilitary.com](http://www.humanamilitary.com)

[WWW.TRICARE.MIL/CHANGES](http://WWW.TRICARE.MIL/CHANGES)

Naval Weapons Station Earle is part of East Region  
TRICARE. Call 1-887-874-2273





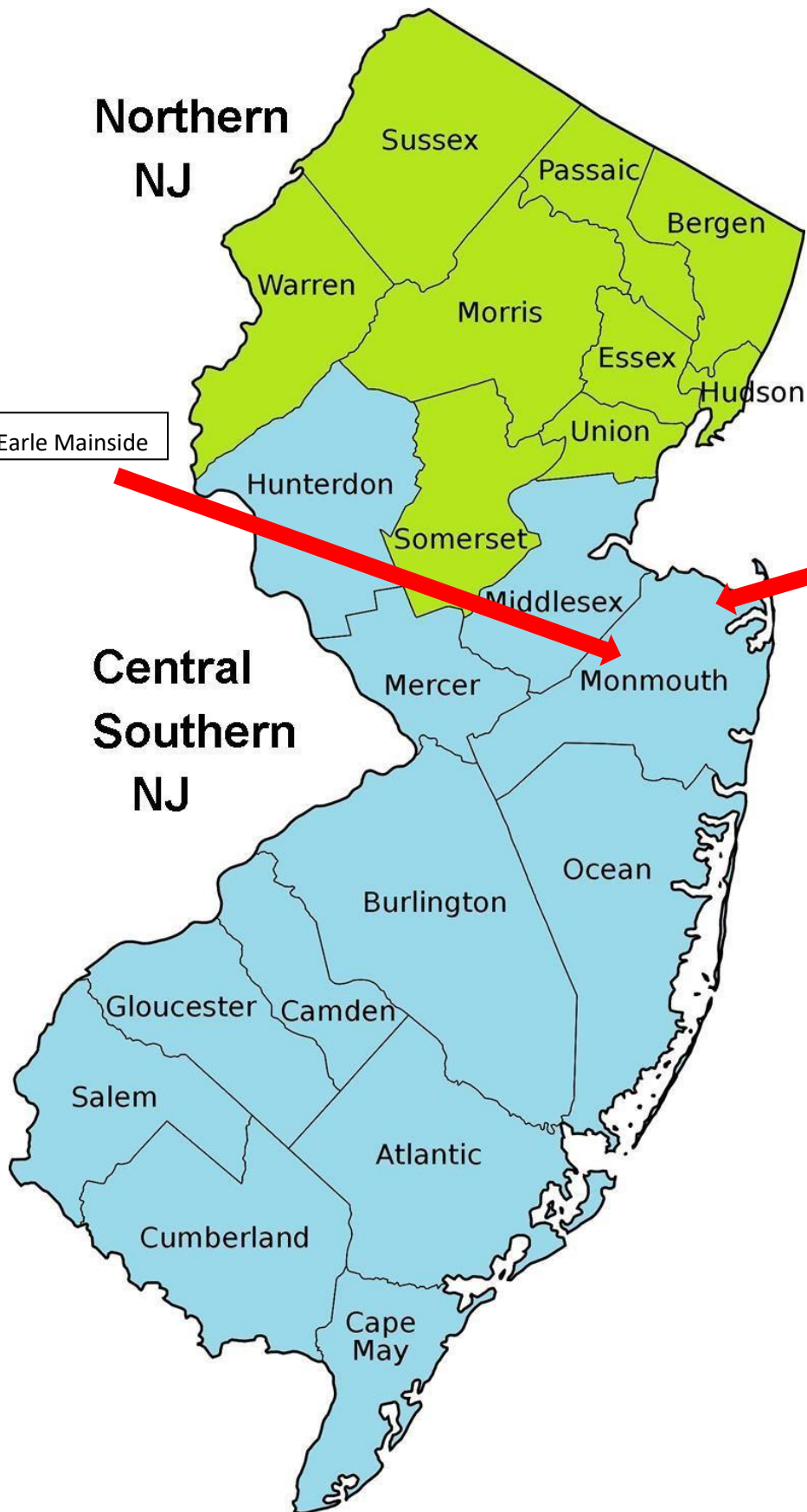
## **\*\*FIND TRICARE APPROVED DOCTORS IN COLTS NECK, NJ\*\***

1. Download the Humana Military Mobile App
2. Register for an account through the App
3. Login
4. Click the "Find Care" tab
5. Click "By Location"
6. Type in the Colts Neck, NJ zip code "07722"

## Northern NJ

NWS Earle Mainside

## Central Southern NJ

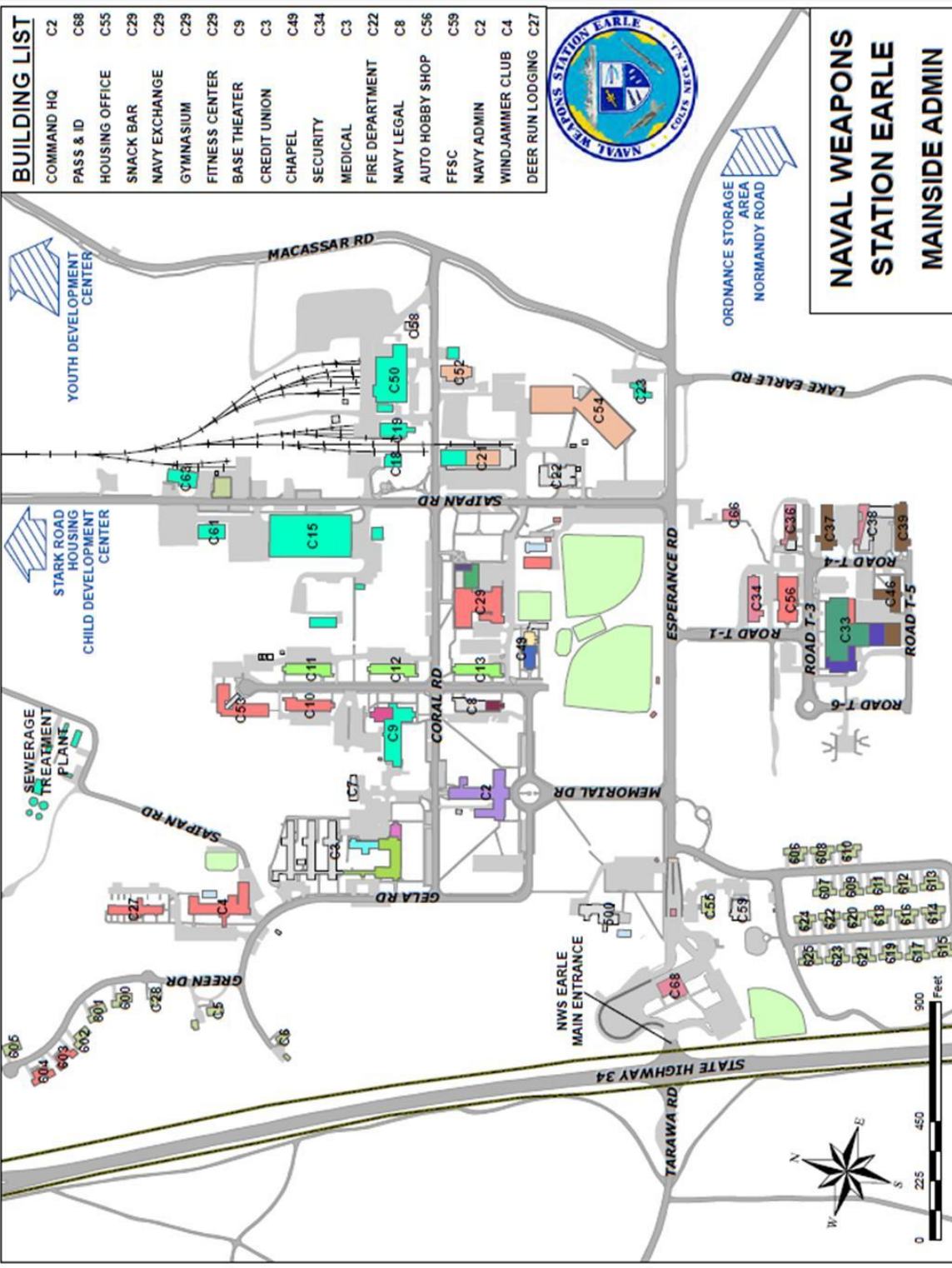


NWS Earle Waterfront

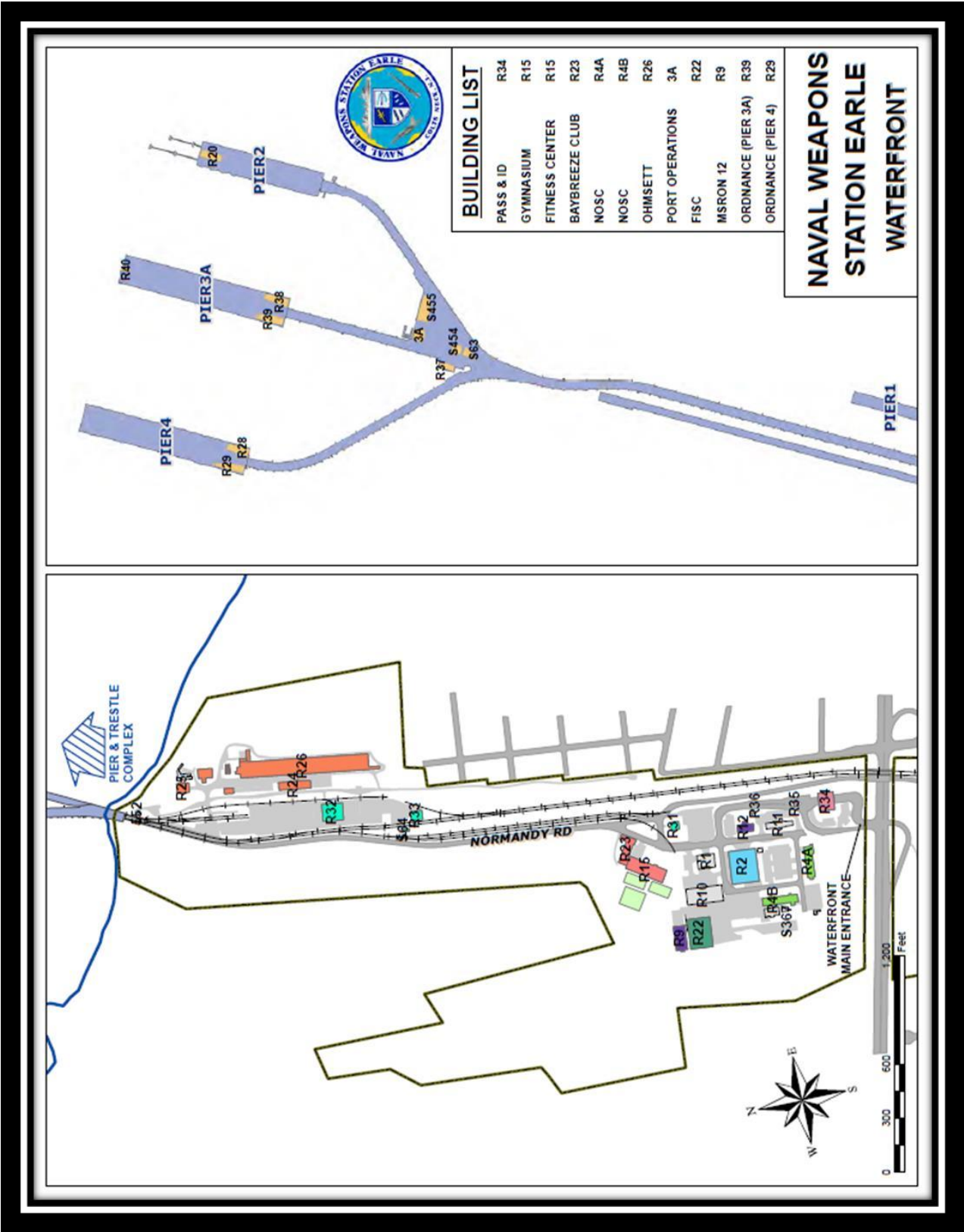
Separated by a 13 mile federal  
roadway.

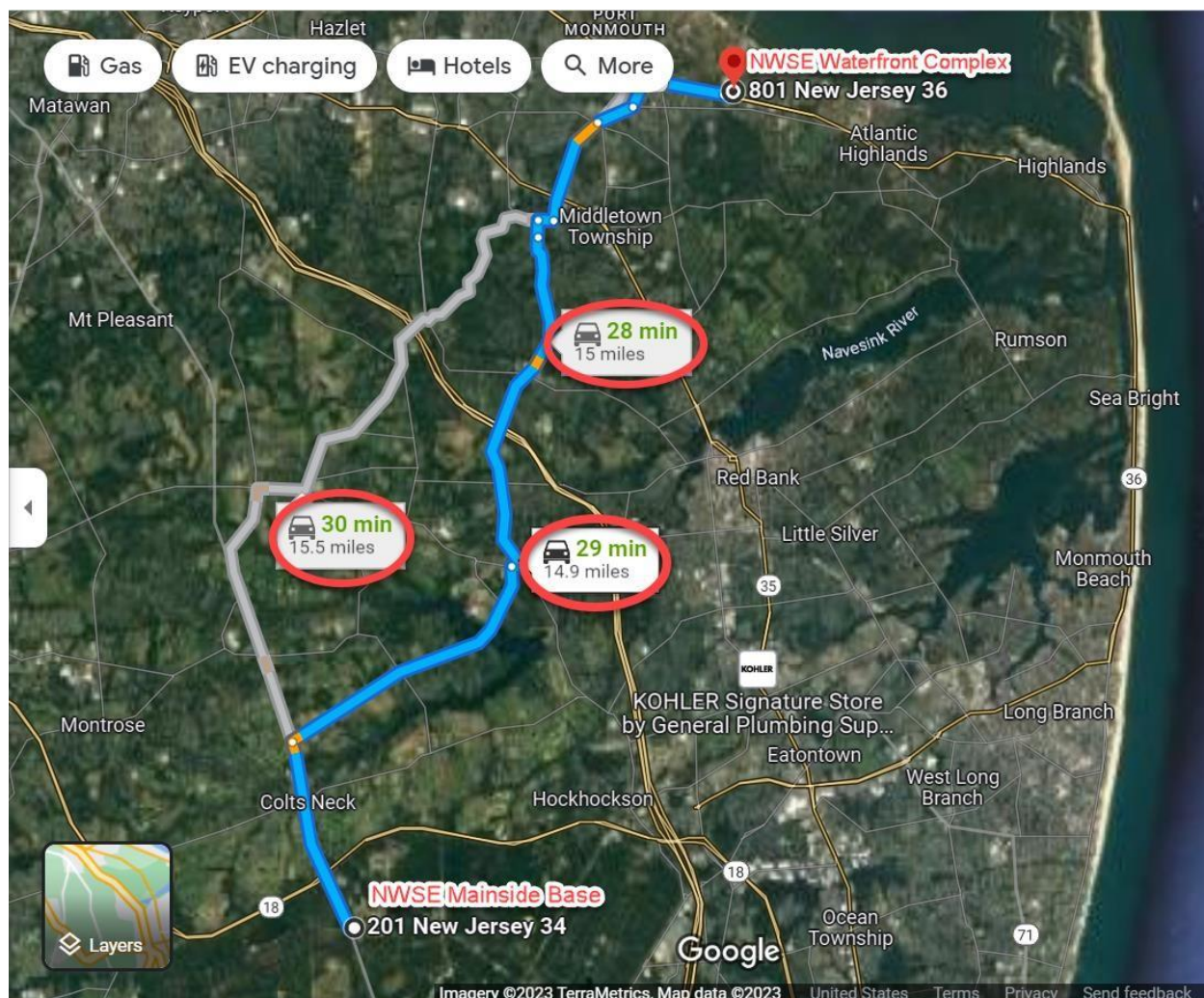
Mainside is located in Colts Neck

Waterfront Complex is located in  
Middletown.









## NWS Earle Transit Map from the Mainside Base to the Waterfront Complex

\*\*\*NOTE\*\*\*

\*\*\* When you arrive at NWS Earle talk to your Sponsor about Normandy Road, a federally owned road that makes transit from the Mainside Base to the Waterfront Complex easier and faster.\*\*\*